



JMP

SKIWEAR
FOR
PROS

SKI SCHOOL / CLUB / LIFT COLLECTION
2018

MAKE YOUR OWN DESIGN ON
www.jmp-mydesign.com

Matterhorn
Diamonds

A private, exclusive Ski School in Zermatt/ Switzerland with the nicest and the best-qualified ski instructors.

They choosed outfits made of:

FABRIC DERMIZAX EV 20.000/20.000 UV protection 5+

PADDING THINSULATE: JKT 80/100, PNT 60

POLARTEC WIND PRO jackets



MAKE YOUR OWN DESIGN ON
www.jump-mydesign.com

JMP[®]

SKIWEAR
FOR
PRO^S

OUR PARTNERS



POLSKIE
KOLEJE
LINOWE



DWIE DOLINY
MUSZYNA - WIERCHOMIA



SKIWEAR
FOR
PROS

JMP®

STOK
SZKOŁA NARCIARSKA

STOK is the biggest Ski School in Poland and it's located in Białka Tatrzańska. We supply Ski School STOK with outfits for over 15 years.

They chose outfits made of:

FABRIC DERMIZAX EV 20.000/20.000 UV protection 5+

PADDING THINSULATE: JKT 80/100, PNT 60

POLARTEC WIND PRO jackets

Entrant

Dermizax EV

Waterproof Breathable Fabric



POLARTEC®
Wind Pro®

Thinsulate™
INSULATION

YKK

MAKE YOUR OWN DESIGN ON
www.jump-mydesign.com

JMP[®]

SKIWEAR
FOR
PRO^S

OUR PARTNERS



POLSKIE
KOLEJE
LINOWE



DWIE DOLINY
MUSZYŃA - WIERCHOMIA



SKIWEAR
FOR
PRO

JMP®



The Ski School provides lesson of alpine skiing, snowboard and freeride on Tirols highest glacier. Every day their outfits are exposed on intensive sunlight, snow or rain, low temperatures or strong wind. We supply outfits for Club Alpin Pitztal Since 2012.

They choosed outfits made of:

FABRIC DERMIZAX EV 20.000/20.000 UV protection 5+

PADDING THINSULATE: JKT 80/100, PNT 60



Thinsulate™
INSULATION

YKK



MAKE YOUR OWN DESIGN ON
www.jmp-mydesign.com

JMP[®]

SKIWEAR
FOR
PROS

OUR PARTNERS



Matterhorn
Diamonds



Top Schischule

Skischule
Karl Maier
Die Skischule in Raarlal



POLSKIE
KOLEJE
LINOWE



DWIE DOLINY
MUSZYNA - WIERCHOMIA



RMF
FM

plus



SKIWEAR
FOR
PRO

JMP®



Ski Planet
nartywlochy.pl

Ski Shool SKI PLANET is Polish Champion of Ski Instructors.
They provide ski training in sunny Italy.

They choosed outfits made of:

FABRIC DERMIZAX EV 20. 000/20. 000

PADDING THINSULATE: JKT 80/100, PNT 60

Entranz

Dermizax EV

Waterproof Breathable Fabric

Thinsulate™
INSULATION

YKK

MAKE YOUR OWN DESIGN ON
www.jmp-mydesign.com

JMP[®]

SKIWEAR
FOR
PRO^S

OUR PARTNERS



Matterhorn
Diamonds



Skischule
Karl Maier
Die Skischule in Raarol



POLSKIE
KOLEJE
LINOWE



DWIE DOLINY
MUSZYNA - WIERCHOMIA



RMF
FM

plus



SKI SCHOOL LINE

AVAILABLE UNTILL 2021

MEN CUT



LADY CUT



Entrant
Dermizax EV
Waterproof Breathable Fabric

Thinsulate™
INSULATION

YKK

Please note that the actual goods may differ slightly from the design and colors in the catalogue

MAKE YOUR OWN DESIGN ON
www.jump-mydesign.com

JMP®

**SKIWEAR
 FOR
 PROS**

SOME OF POSSIBLE EXAMPLES
 MUCH MORE COLOURS COMBINATIONS POSSIBLE

MEN CUT SIZE CHART

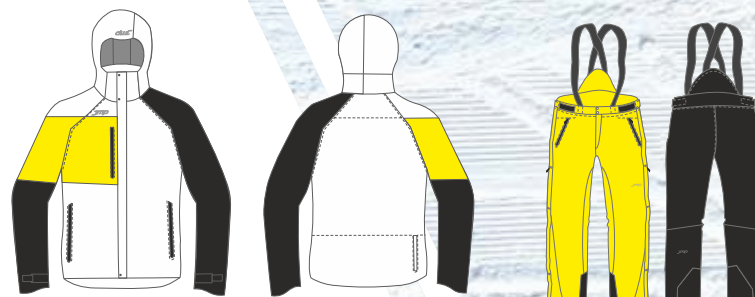
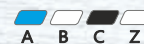
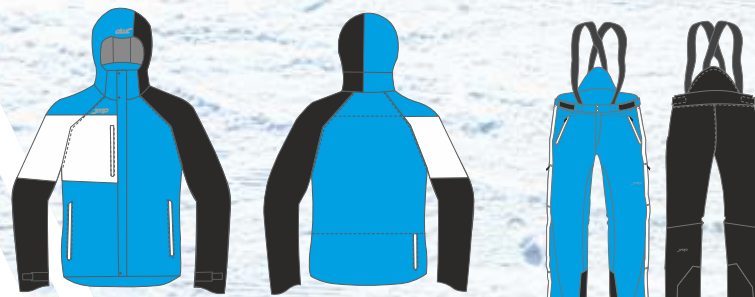
JKT&PNT XS, S, M, L, XL, XXL, 3XL

PNT EXTRA SIZES: +5cm longer/-5cm shorter

LADY CUT SIZE CHART

JKT&PNT 34/XS, 36/S, 38/M, 40/L, 42/XL

PNT EXTRA SIZES: +5cm longer/-5cm shorter



FABRIC DERMIZAX EV 20 000/20 000

PADDING THINSULATE: JKT MEN 80,

JKT LADY 100, PNT 60

COLOUR UV resistance grade 5

Dermizax EV (20.000/20.000)
 UV color resistance GRADE 5

110	white
002	light grey
008	dark grey
009	black
810	brown
056	red
116	orange
263	yellow
300	lime
384	green
626	sax bis
615	sax
714	royal 2
699	navy

waterproof pocket zippers

501	white
336	light grey
580	black
519	red
523	orange
504	yellow
827	lime
550	sax

Please note that the actual goods may differ slightly from the design and colors in the catalogue

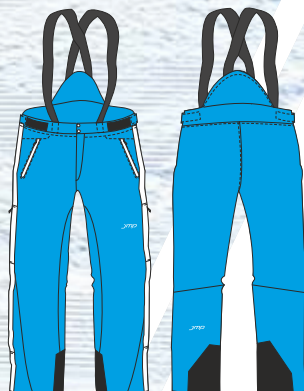
SKI SCHOOL LINE

AVAILABLE UNTILL 2019

MEN CUT



LADY CUT



Entrant
Dermizax EV
Waterproof Breathable Fabric

Thinsulate™
INSULATION

YKK

Please note that the actual goods may differ slightly from the design and colors in the catalogue

MAKE YOUR OWN DESIGN ON
www.jump-mydesign.com

JMP[®]

**SKIWEAR
 FOR
 PROS**

MEN CUT SIZE CHART

JKT&PNT XS, S, M, L, XL, XXL, 3XL

PNT EXTRA SIZES: +5cm longer/-5cm shorter

LADY CUT SIZE CHART

JKT&PNT 34/XS, 36/S, 38/M, 40/L, 42/XL

PNT EXTRA SIZES: +5cm longer/-5cm shorter

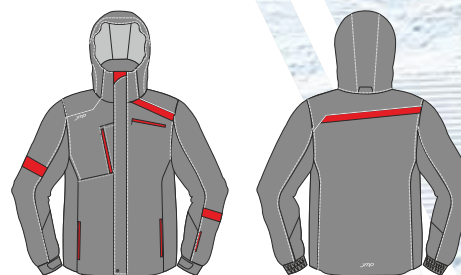
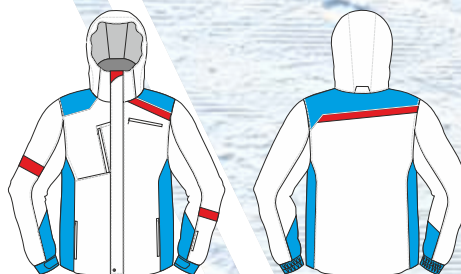
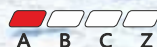
FABRIC DERMIZAX EV 20 000/20 000

PADDING THINSULATE: JKT MEN 80,

JKT LADY 100, PNT 60

COLOUR UV resistance grade 5

SOME OF POSSIBLE EXAMPLES
 MUCH MORE COLOURS COMBINATIONS POSSIBLE



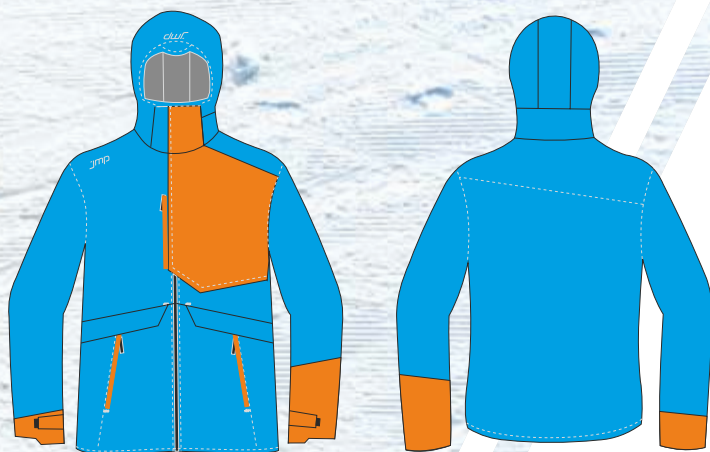
Dermizax EV (20.000/20.000) UV color resistance GRADE 5	
110	white
002	light grey
008	dark grey
009	black
810	brown
056	red
116	orange
263	yellow
300	lime
384	green
626	sax bis
615	sax
714	royal 2
699	navy
waterproof pocket zippers	
501	white
336	light grey
580	black
519	red
523	orange
504	yellow
827	lime
550	sax

Please note that the actual goods may differ slightly from the design and colors in the catalogue

SKI SCHOOL FREESTYLE LINE

AVAILABLE UNTILL 2018

MEN CUT



Entrant
Dermizax EV
Waterproof Breathable Fabric

Thinsulate™
INSULATION

YKK

Please note that the actual goods may differ slightly from the design and colors in the catalogue

MAKE YOUR OWN DESIGN ON
www.jmp-mydesign.com

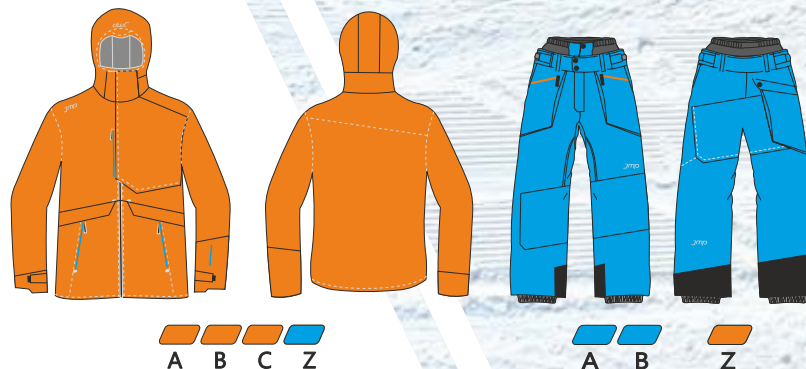
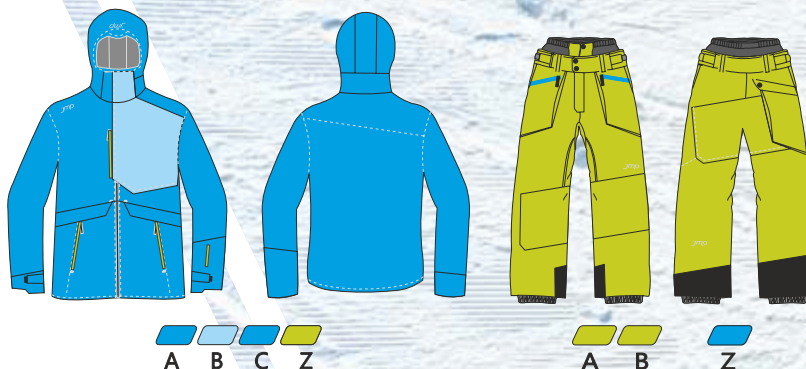
JMP[®]

**SKIWEAR
 FOR
 PRO^S**

SOME OF POSSIBLE EXAMPLES
 MUCH MORE COLOURS COMBINATIONS POSSIBLE

MEN CUT SIZE CHART
JKT&PNT S, M, L, XL, XXL

FABRIC DERMIZAX EV 20 000/20 000
PADDING THINSULATE: JKT 80, PNT 60
COLOUR UV resistance grade 5



Dermizax EV (20.000/20.000)	
UV color resistance GRADE 5	
110	white
002	light grey
008	dark grey
009	black
810	brown
056	red
116	orange
263	yellow
300	lime
384	green
626	sax bis
615	sax
714	royal 2
699	navy
waterproof pocket zippers	
501	white
336	light grey
580	black
519	red
523	orange
504	yellow
827	lime
550	sax

Please note that the actual goods may differ slightly from the design and colors in the catalogue

CLUB LINE
AVAILABLE UNTILL 2021

JKT ADULT MEN & ADULT LADY & JUNIOR
PNT ADULT MEN & JUNIOR



Please note that the actual goods may differ slightly from the design and colors in the catalogue

MAKE YOUR OWN DESIGN ON
www.jmp-mydesign.com

JMP[®]

**SKIWEAR
 FOR
 PRO^S**

MEN CUT SIZE CHART

JKT&PNT XS, S, M, L, XL, XXL, 3XL

LADY CUT SIZE CHART

JKT 34/XS, 36/S, 38/M, 40/L, 42/XL

JUNIOR CUT SIZE CHART

JKT&PNT 116, 128, 134, 140, 146, 152, 158

FABRIC DERMIZAX EV 20 000/20 000

PADDING THINSULATE: JKT MEN 80,
 JKT LADY & JUNIOR 100, PNT 60

COLOUR UV resistance grade 5

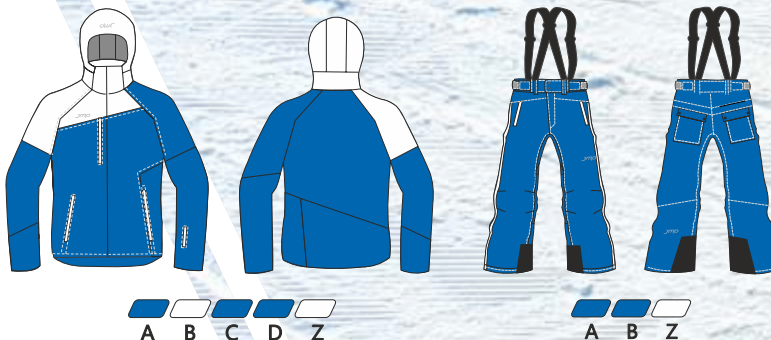
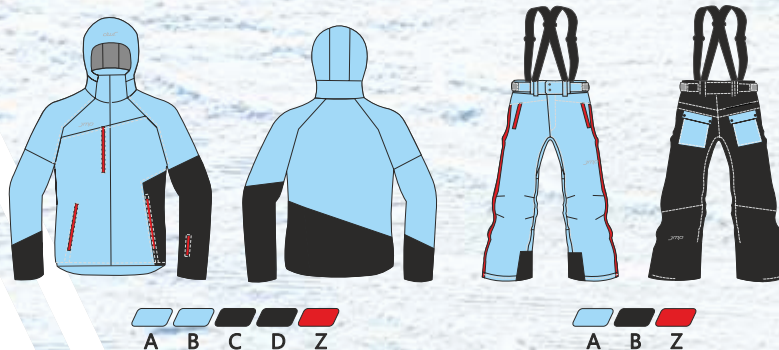
Dermizax EV (20.000/20.000)
 UV color resistance GRADE 5

110	white
002	light grey
008	dark grey
009	black
810	brown
056	red
116	orange
263	yellow
300	lime
384	green
626	sax bis
615	sax
714	royal 2
699	navy

waterproof pocket zippers

501	white
336	light grey
580	black
519	red
523	orange
504	yellow
827	lime
550	sax

SOME OF POSSIBLE EXAMPLES
 MUCH MORE COLOURS COMBINATIONS POSSIBLE



Please note that the actual goods may differ slightly from the design and colors in the catalogue

CLUB LINE
AVAILABLE UNTILL 2019

ADULT MEN & JUNIOR



Entrant
Dermizax EV
Waterproof Breathable Fabric

Thinsulate™
INSULATION

YKK

Please note that the actual goods may differ slightly from the design and colors in the catalogue

MAKE YOUR OWN DESIGN ON
www.jmp-mydesign.com

JMP[®]

**SKIWEAR
 FOR
 PROS**

MEN CUT SIZE CHART

JKT&PNT XS, S, M, L, XL, XXL, 3XL

JUNIOR CUT SIZE CHART

JKT&PNT 116, 128, 134, 140, 146, 152, 158

FABRIC DERMIZAX EV 20 000/20 000

PADDING THINSULATE: JKT MEN 80,
 JKT JUNIOR 100, PNT 60

SOME OF POSSIBLE EXAMPLES
 MUCH MORE COLOURS COMBINATIONS POSSIBLE



COLOUR UV resistance grade 5

Dermizax EV (20.000/20.000) UV color resistance GRADE 5	
110	white
002	light grey
008	dark grey
009	black
810	brown
056	red
116	orange
263	yellow
300	lime
384	green
626	sax bis
615	sax
714	royal 2
699	navy
waterproof pocket zippers	
501	white
336	light grey
580	black
519	red
523	orange
504	yellow
827	lime
550	sax



Please note that the actual goods may differ slightly from the design and colors in the catalogue

SKI LIFT LINE

AVAILABLE UNTILL 2019

MEN CUT



Entrant
Dermizax EV
Waterproof Breathable Fabric

CORDURA
BRAND
F A B R I C

Thinsulate
INSULATION

YKK

LADY CUT



Please note that the actual goods may differ slightly from the design and colors in the catalogue

MAKE YOUR OWN DESIGN ON
www.jump-mydesign.com

JMP[®]

**SKIWEAR
 FOR
 PRO^S**

MEN CUT SIZE CHART

JKT&PNT XS, S, M, L, XL, XXL, 3XL

PNT EXTRA SIZES: +5cm longer/-5cm shorter

LADY CUT SIZE CHART

JKT 34/XS, 36/S, 38/M, 40/L, 42/XL

SOME OF POSSIBLE EXAMPLES
 MUCH MORE COLOURS COMBINATIONS POSSIBLE



FABRIC DERMIZAX EV 20 000/20 000

PADDING THINSULATE: JKT 100, PNT 60

COLOUR UV resistance grade 5
CORDURA REINFORMCEMENTS

Dermizax EV (20.000/20.000) UV color resistance GRADE 5	
110	white
002	light grey
008	dark grey
009	black
810	brown
056	red
116	orange
263	yellow
300	lime
384	green
626	sax bis
615	sax
714	royal 2
699	navy

waterproof pocket zippers	
501	white
336	light grey
580	black
519	red
523	orange
504	yellow
827	lime
550	sax

Cordura reinforcements	
999	black



Please note that the actual goods may differ slightly from the design and colors in the catalogue

MIDDLE JACKET LINE

AVAILABLE UNTILL 2021

MEN CUT



YKK

Please note that the actual goods may differ slightly from the design and colors in the catalogue

MAKE YOUR OWN DESIGN ON
www.jmp-mydesign.com

JMP[®]

SKIWEAR
FOR
PRO^S

SOME OF POSSIBLE EXAMPLES
MUCH MORE COLOURS COMBINATIONS POSSIBLE

MEN CUT SIZE CHART
XS, S, M, L, XL, XXL, 3XL

FABRIC NYLON
PADDING PRIMALOFT SPORT 60

face fabric

009 black

056 red

615 sax

coil main and pocket zippers

501 white

336 light grey

580 black

519 red

523 orange

504 yellow

535 lime FLUO

550 sax




A Z




A Z




A Z

Please note that the actual goods may differ slightly from the design and colors in the catalogue

SKI LIFT SOFT SHELL LINE

AVAILABLE UNTILL 2018

MEN & LADY CUT



TORAYDELPHYTM

CORDURA[®]
BRAND
F A B R I C

YKK

Please note that the actual goods may differ slightly from the design and colors in the catalogue

MAKE YOUR OWN DESIGN ON
www.jmp-mydesign.com

JMP[®]

**SKIWEAR
 FOR
 PROS**

SOME OF POSSIBLE EXAMPLES
 MUCH MORE COLOURS COMBINATIONS POSSIBLE

MEN CUT SIZE CHART
 XS, S, M, L, XL, XXL, 3XL

LADY CUT SIZE CHART
 34/XS, 36/S, 38/M, 40/L, 42/XL

FABRIC SOFT SHELL TORAY DELFY
CORDURA REINFORMCEMENTS

Soft shell 3L Toray Delfy
 (10.000/10.000)

009 black

056 red

615 sax

Cordura reinforcements

999 black

coil main and pocket zippers

501 white

336 light grey

580 black

519 red

523 orange

504 yellow

535 lime FLUO

550 sax



A B C Z



A B C Z



A B C Z

Please note that the actual goods may differ slightly from the design and colors in the catalogue

POLARTEC WIND PRO LINE

AVAILABLE UNTILL 2018

MEN & LADY CUT

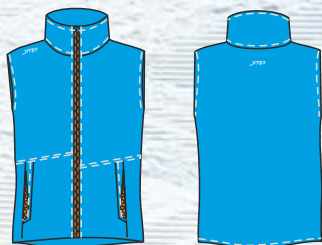
MEN CUT



LADY CUT



JUNIOR CUT



POLARTEC[®]
Wind Pro[®]

YKK

Please note that the actual goods may differ slightly from the design and colors in the catalogue

MAKE YOUR OWN DESIGN ON
www.jmp-mydesign.com

JMP[®]

**SKIWEAR
 FOR
 PROS**

SOME OF POSSIBLE EXAMPLES
 MUCH MORE COLOURS COMBINATIONS POSSIBLE

MEN CUT SIZE CHART

XS, S, M, L, XL, XXL, 3XL

LADY CUT SIZE CHART

34/XS, 36/S, 38/M, 40/L, 42/XL

JUNIOR CUT SIZE CHART

116, 128, 134, 140, 146, 152, 158

FABRIC POLARTEC WIND PRO HARD FACE



Polartec WindPro	
009	black
615	sax
056	red
263	yellow

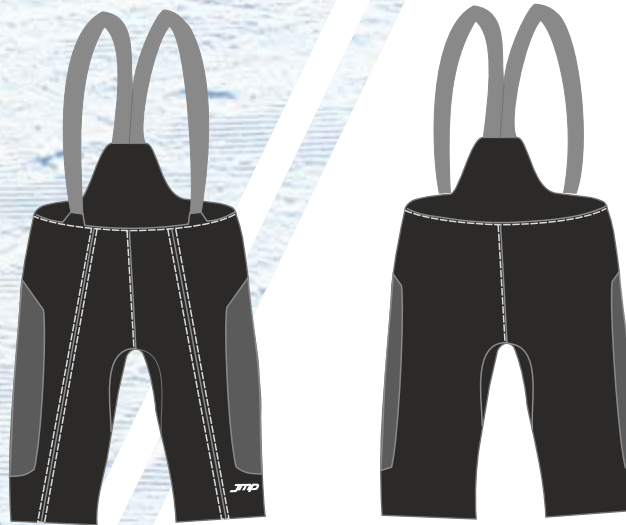
coil main and pocket zippers	
501	white
336	light grey
580	black
519	red
523	orange
504	yellow
535	lime FLUO
550	sax

Please note that the actual goods may differ slightly from the design and colors in the catalogue

SKI CLUB SOFT SHELL SHORT PANTS

AVAILABLE UNTILL 2018

MEN & JUNIOR CUT



A

TORAYDELFY™

Strongflex®



YKK

Please note that the actual goods may differ slightly from the design and colors in the catalogue

MAKE YOUR OWN DESIGN ON
www.jmp-mydesign.com

JMP[®]

**SKIWEAR
FOR
PRO^S**

SOME OF POSSIBLE EXAMPLES
MUCH MORE COLOURS COMBINATIONS POSSIBLE

MEN CUT SIZE CHART
XS, S, M, L, XL, XXL, 3XL

JUNIOR CUT SIZE CHART
116, 128, 134, 140, 146, 152, 158

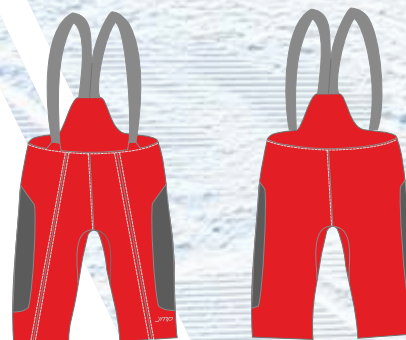
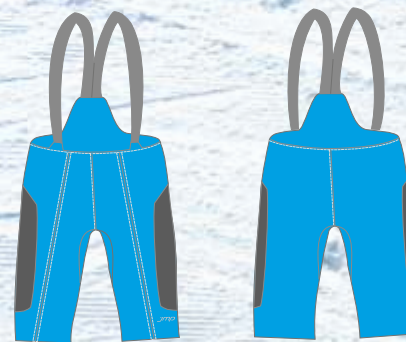
FABRIC SOFT SHELL TORAY DELFY
CORDURA REINFORCEMENTS

Soft shell 3L Toray Delfy
(10.000/10.000)

009 black

056 red

615 sax



Please note that the actual goods may differ slightly from the design and colors in the catalogue

Dermizax EV (20.000/20.000)
UV color resistance GRADE 5

110	white
002	light grey
008	dark grey
009	black
810	brown
056	red
116	orange
263	yellow
300	lime
384	green
626	sax bis
615	sax
714	royal 2
699	navy

Toray Delfy (10.000/10.000)
UV color resistance GRADE 4

009-TD	black
056-TD	red
114-TD	orange
615-TD	sax
714-TD	royal 2
699-TD	navy

Soft shell 3L Toray Delfy
(10.000/10.000)

009	black
056	red
615	sax

Polartec WindPro

009	black
615	sax
056	red
263	yellow

face fabric

009	black
056	red
615	sax

Cordura reinforcements

999	black
-----	-------

waterproof pocket zippers

501	white
336	light grey
580	black
519	red
523	orange
504	yellow
827	lime
550	sax

coil main and pocket zippers

501	white
336	light grey
580	black
519	red
523	orange
504	yellow
535	lime FLUO
550	sax

WE WORK WITH PREMIUM BRANDS

JMP®

SKIWEAR
FOR
PROS



YKK



POLARTEC®
Wind Pro®

Thinsulate™
INSULATION

TORAYDELFY™

Strongflex®



CORDURA®
BRAND
F A B R I C

The logo for JMP, featuring the letters 'JMP' in a bold, italicized, sans-serif font. The 'J' and 'M' are connected, and the 'P' is separate. A registered trademark symbol (®) is located to the upper right of the 'P'. The logo is set against a yellow background that is part of a larger yellow shape on the left side of the page.

 **POLAND**

JMP SPORTS WEAR S.C.

ul. Orkana 44D

34-424 Szaflary

e-mail: biuro@jmpsport.com.pl

phone: +48 18 2754255

Distributor in Kraków:

Jarosław Jasica,

e-mail: jarek@jmpsport.com.pl

phone: +48 601054545

DISTRIBUTORS

 **AUSTRIA**

CTH

Egon Gigele

e-mail: e.gigele@cth-group.at

phone: +43 664 75 026 213

 **FRANCE**

CTH

Pierre E. Delattre

e-mail: p.delattre@cth-group.at

phone: +33 (0)6 63 61 86 62

 **SLOVAKIA**

JMP SK

Matúš Šoltys

Vajanského 6

080 01 Prešov

e-mail: matus@jmpsport.pl

phone: +421 (0) 905 324 050

 **DEUTSCHLAND**

JMP DE

Adrian Liebermann

e-mail: info@hgg-sport.de

phone: +49 (0)9561234210

 **ČESKÁ REPUBLIKA**

JMP CZ

Martin Chorogwicki

Severná 4

06001 Kežmarok

Slovakia

e-mail: choro@jmpsport.pl

phone: +421(0)905168176

 **Spain**

Sergio Gracia Mateo

c/Eugenio Lucas, 20

50018 Zaragoza Spain

Antonio Garcia

e-mail: spain.jmp@gmail.com

phone: +34 659 262 955

MAKE YOUR OWN DESIGN ON

www.jmp-mydesign.com